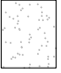
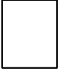
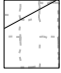

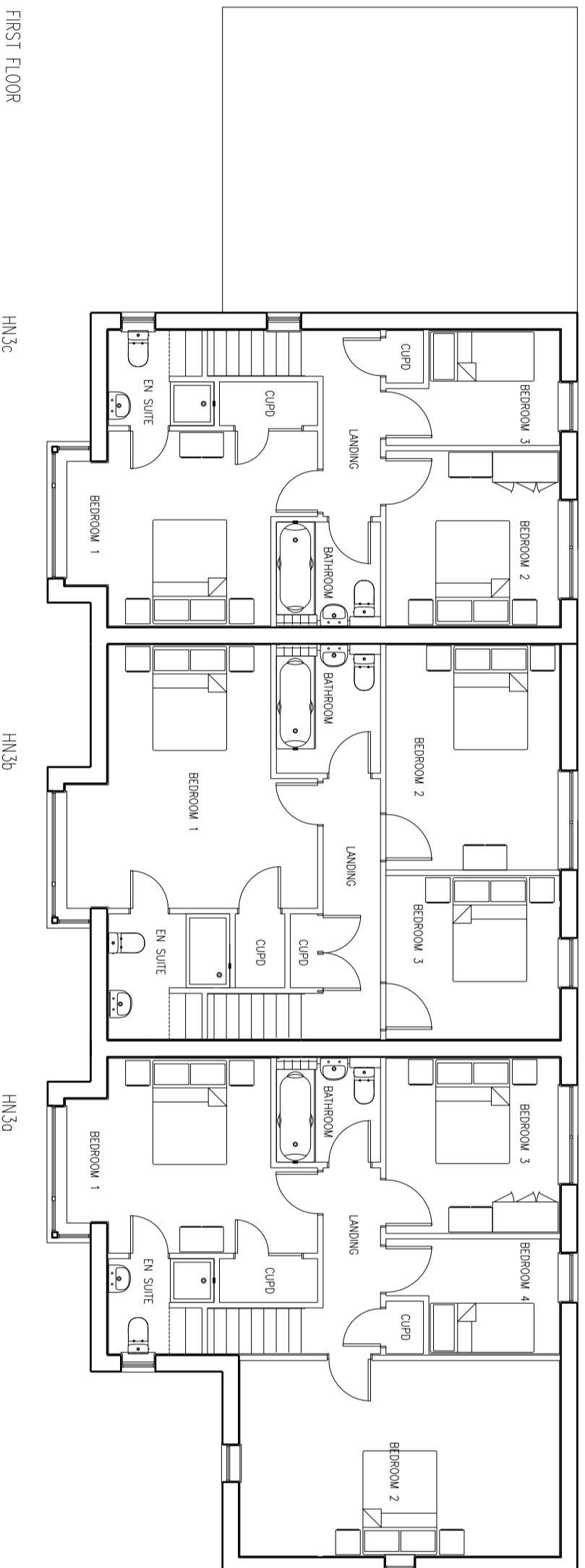
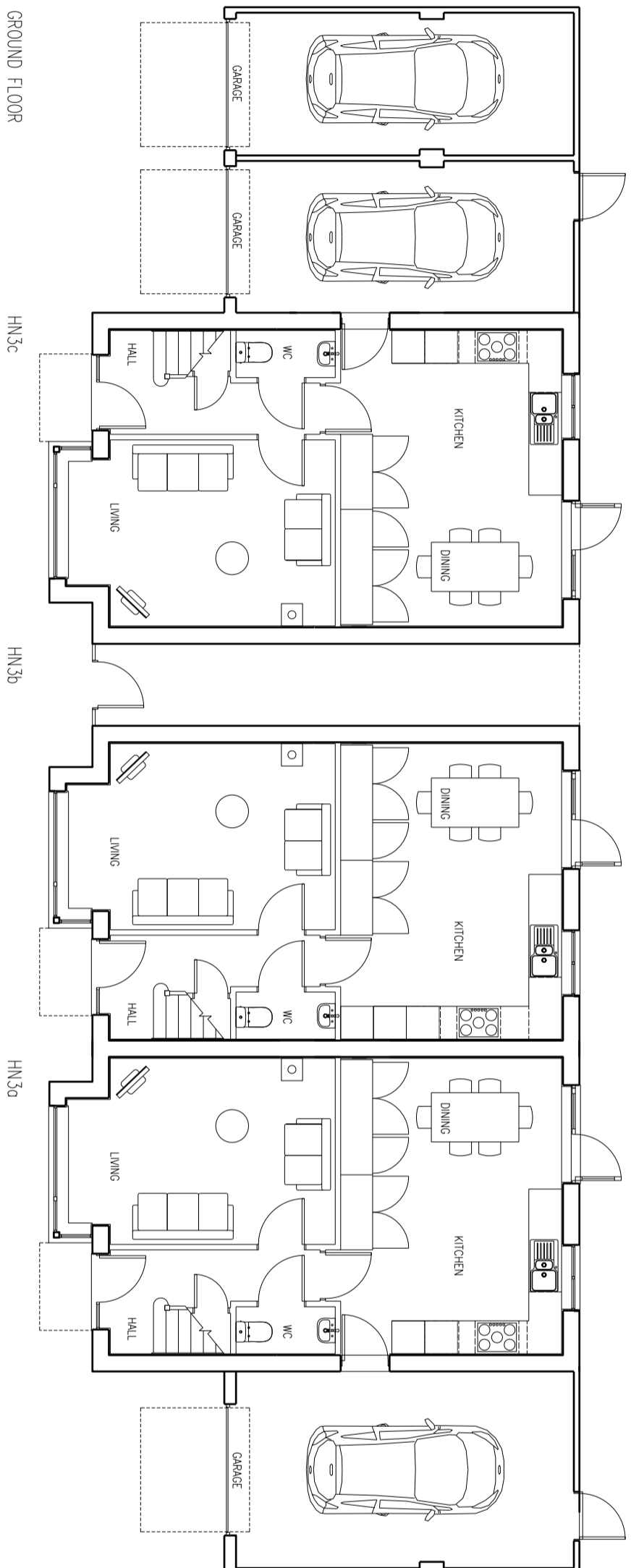


Materials Key

- Render 
- Weston Red 
- Cedar 
- Rubble stone wall 



date	rev	issued	chk	note
26.08.15	A	JP	RD	Woodburner flues added, Height of southern section reduced and layout changed accordingly; and installation amended to this floor

 **Stride Treglown**

Architect: Tom Hastings, Interior Design: Shelly Stevens, Landscape Architecture: Grant Dudgeon
 Project: Prospera House, The Prospera Offices, 0-9-11, 8-11-14, 8-5-3-11 E
 T: 01792 924327 F: 01792 924327 www.strideandreglown.co.uk

PROJECT: Quarry Road, Chipping Sodbury
 for Newland Homes

DRAWING TITLE: HN3a, HN3b & HN3c Plans
 (Plots 9, 10, 11)

STATUS: **PLANNING**

SCALE	DATE	DRAWN BY	CHECKED BY
1:100	30.07.15	MS	
DRAWING NUMBER	REVISION		
32243_PL022	A		