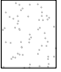
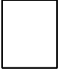
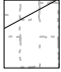

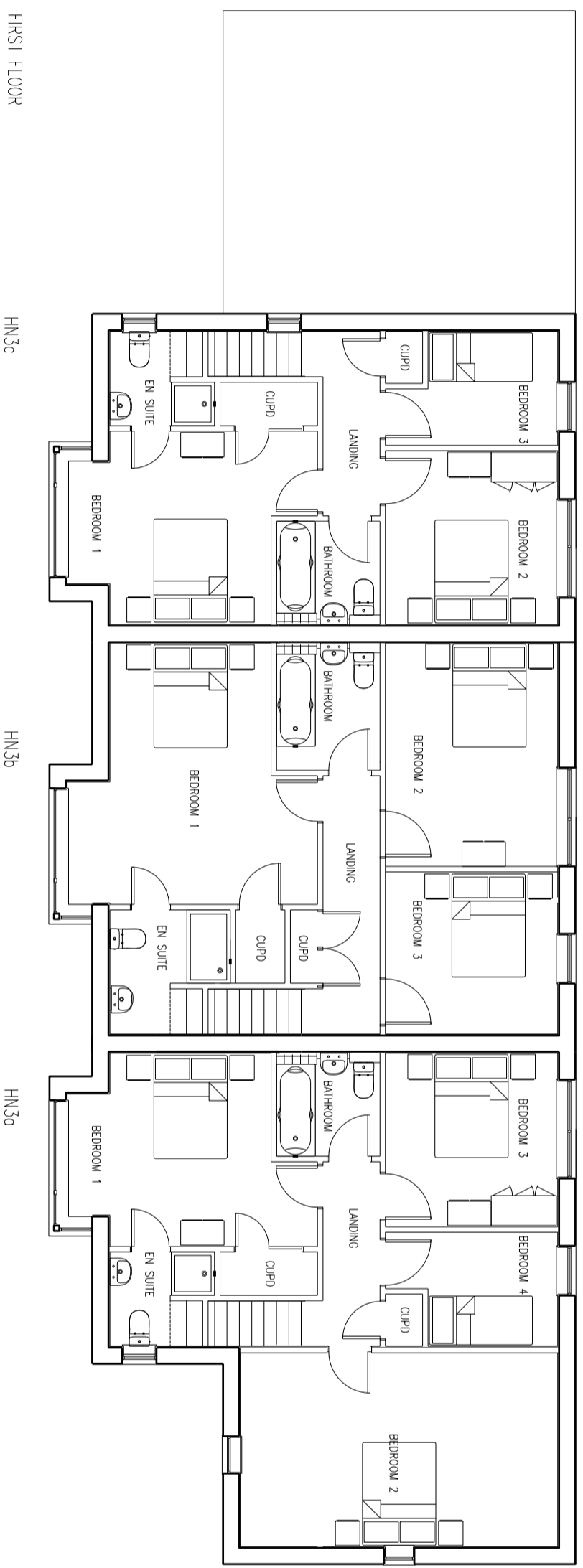
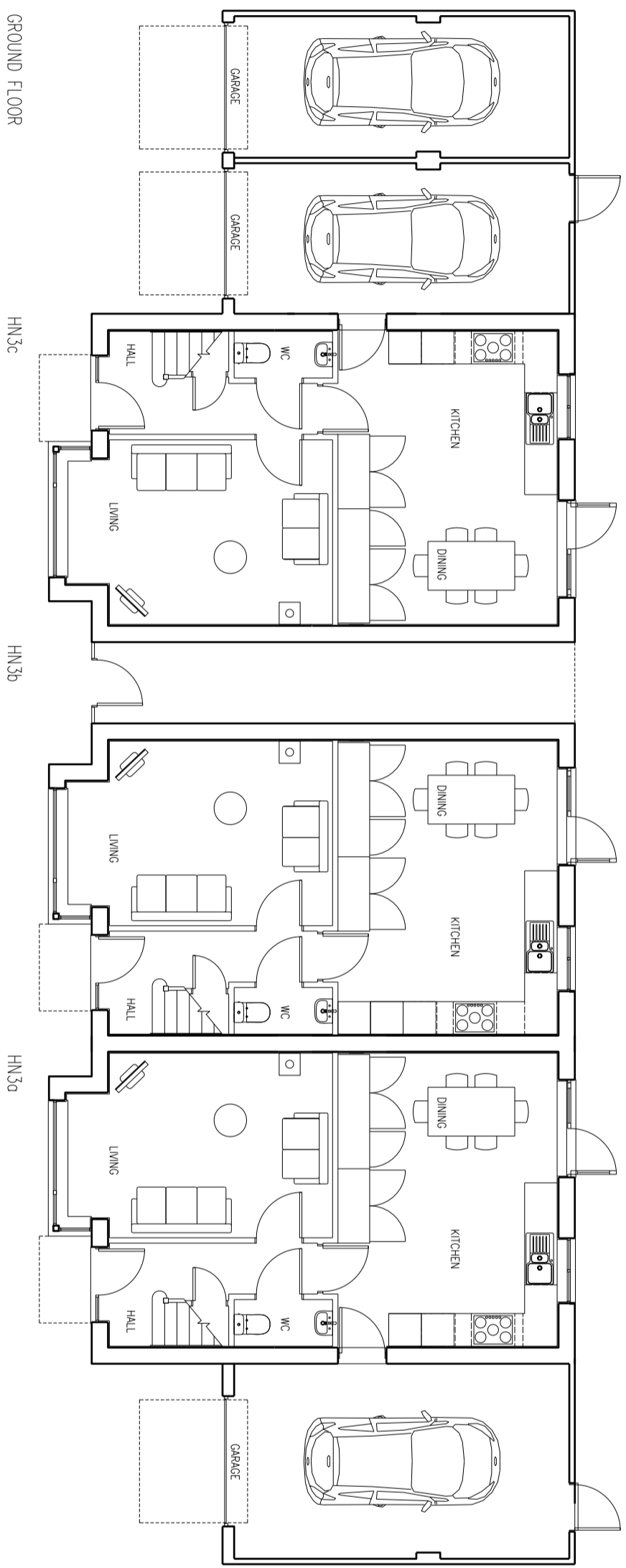


Materials Key

- Render 
- Weston Red 
- Cedar 
- Rubble stone wall 



date	rev	issued	chk	note
26.08.15	A	JP	RD	Woodburner flues added, height of southern section reduced and layout changed accordingly; and installation amended to this floor

 **Stride Treglown**

Architect: Tom Hastings, Interior Design: Ashley Stevens, Landscape Architects: Green Design
 Proposed House: The Pinnacles, Clifton, Devon, B1141LS 3JF
 T 01792 924327 F 01792 924327 www.strideandreglown.co.uk

PROJECT
 Quarry Road, Chipping Sodbury
 for Newland Homes

DRAWING TITLE
 HN3a, HN3b & HN3c Plans
 (Plots 9, 10, 11)

STATUS
PLANNING

SCALE	DATE	DRAWN BY	CHECKED BY
1:100	30.07.15	MS	
DRAWING NUMBER	REVISION		
32243_P1022	A		