
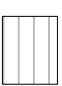


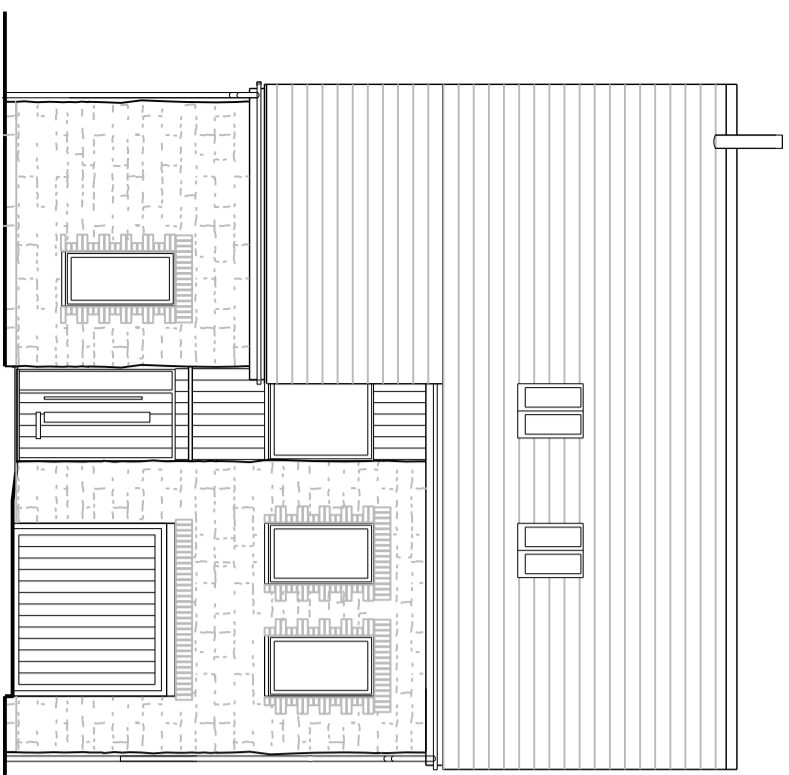
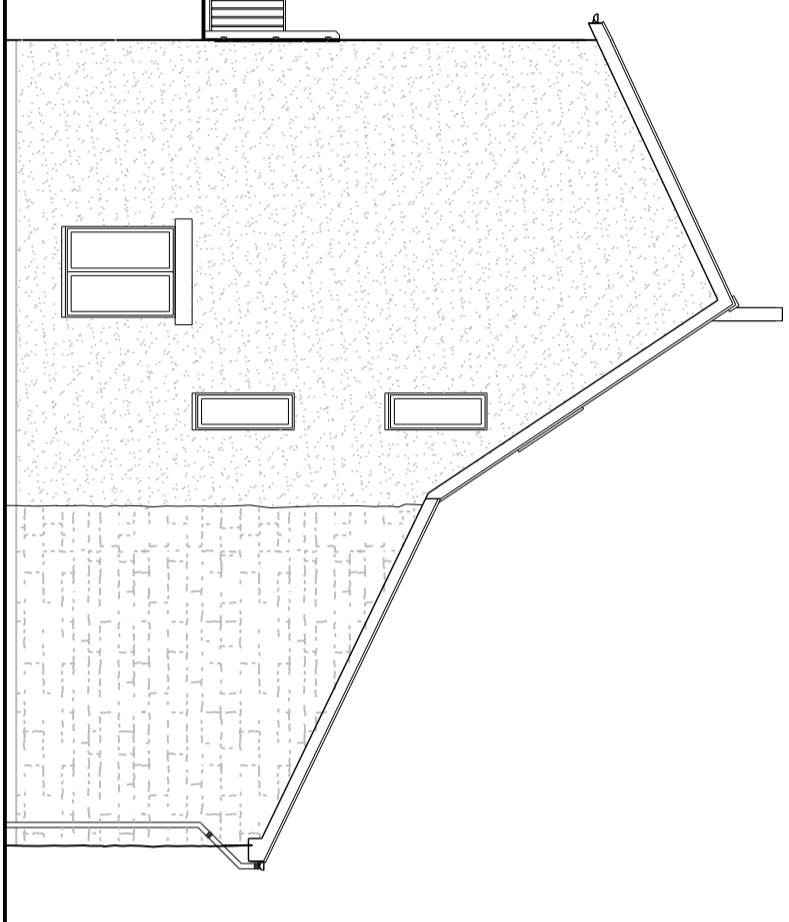


Materials Key

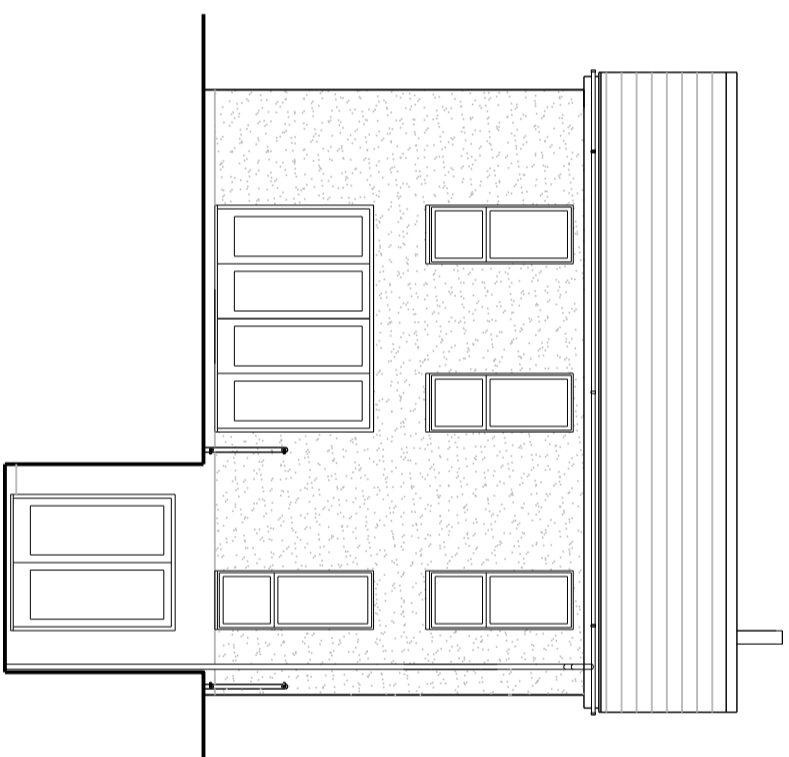
- Render 
- Weston Red 
- Cedar 
- Rubble stone wall 



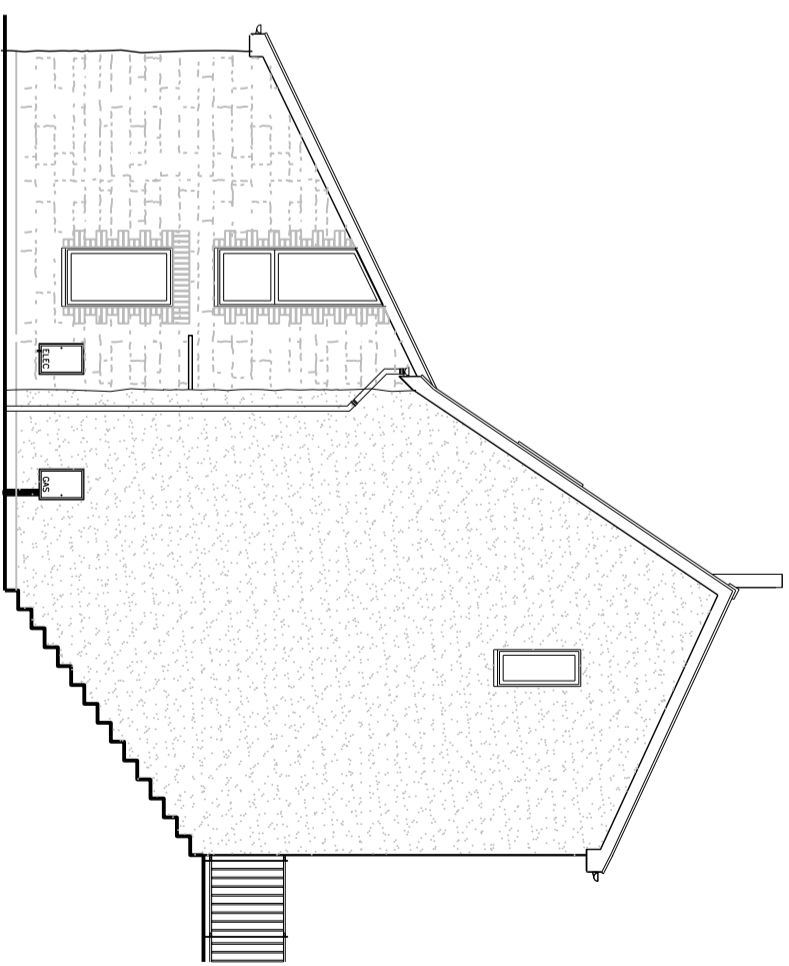
FRONT ELEVATION



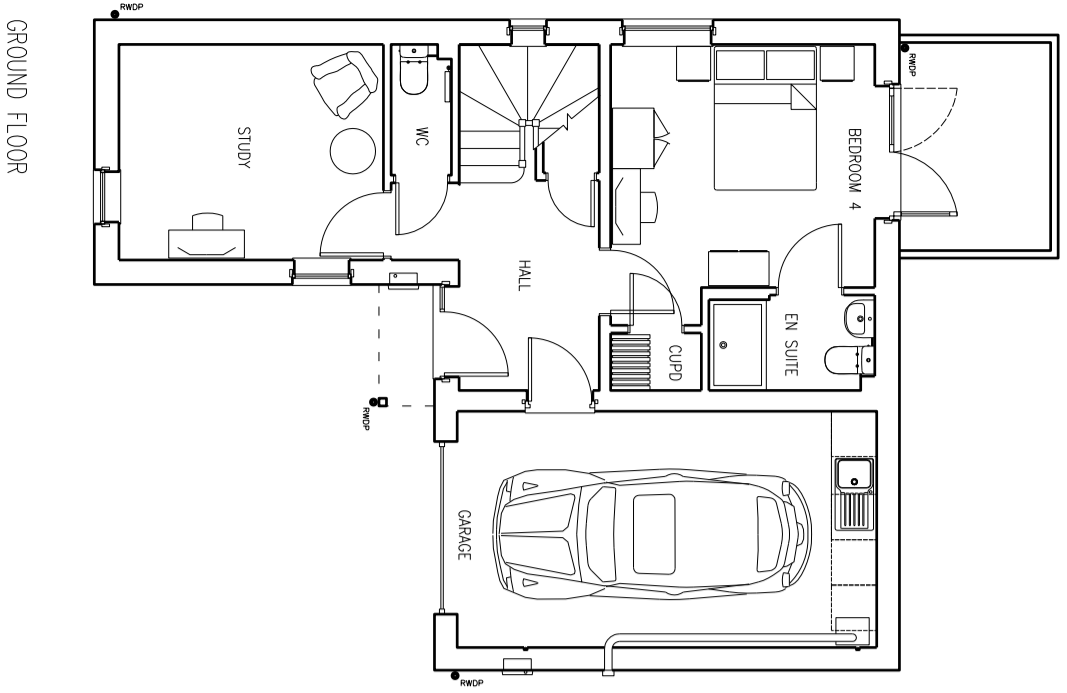
SIDE ELEVATION



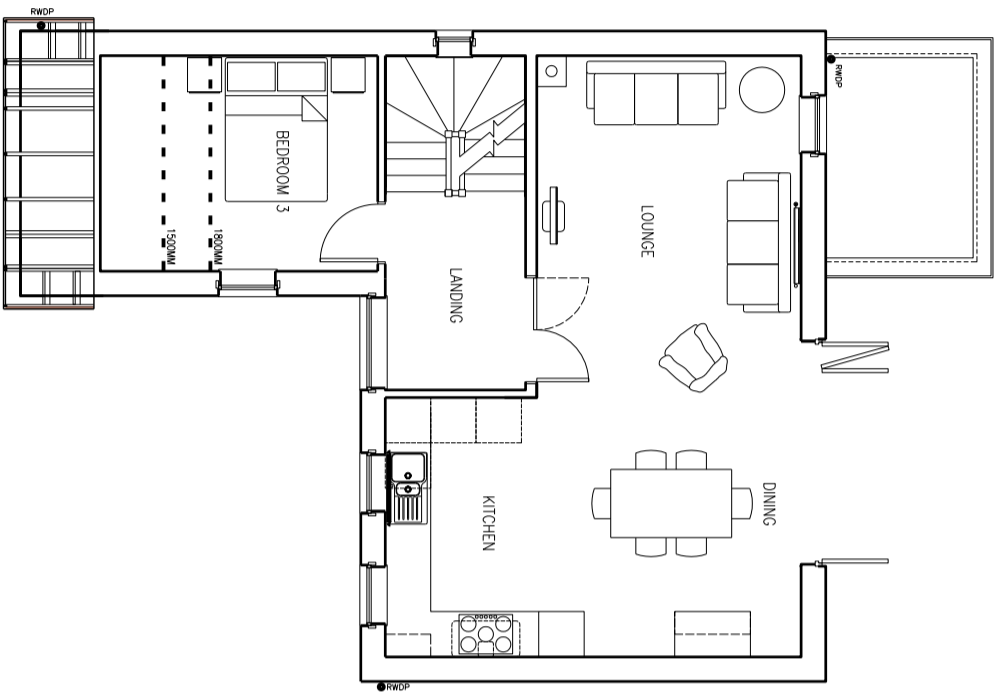
REAR ELEVATION



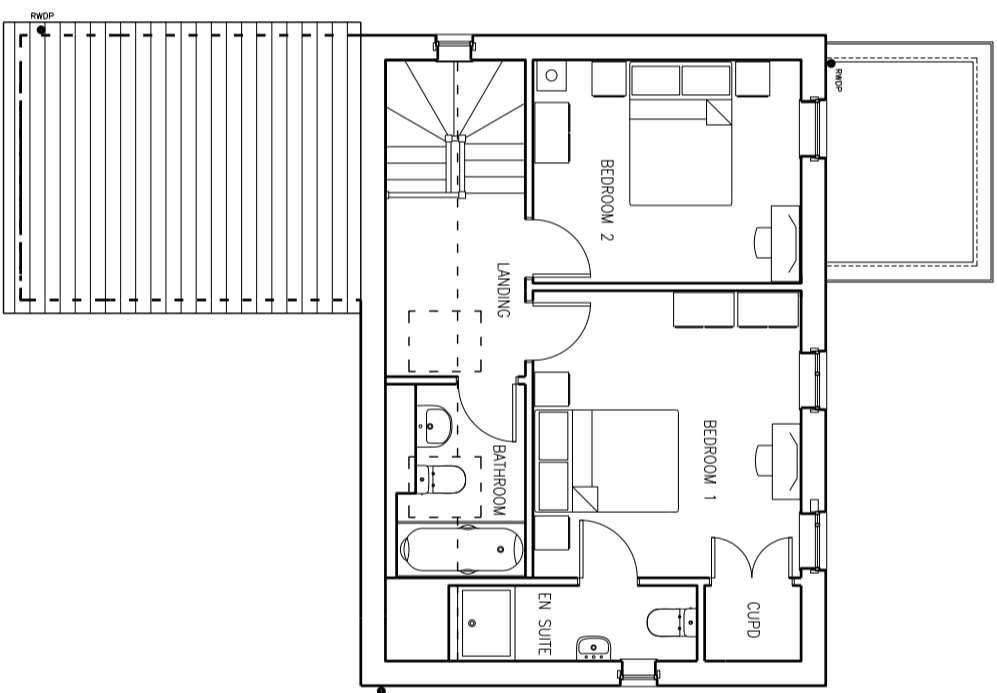
SIDE ELEVATION



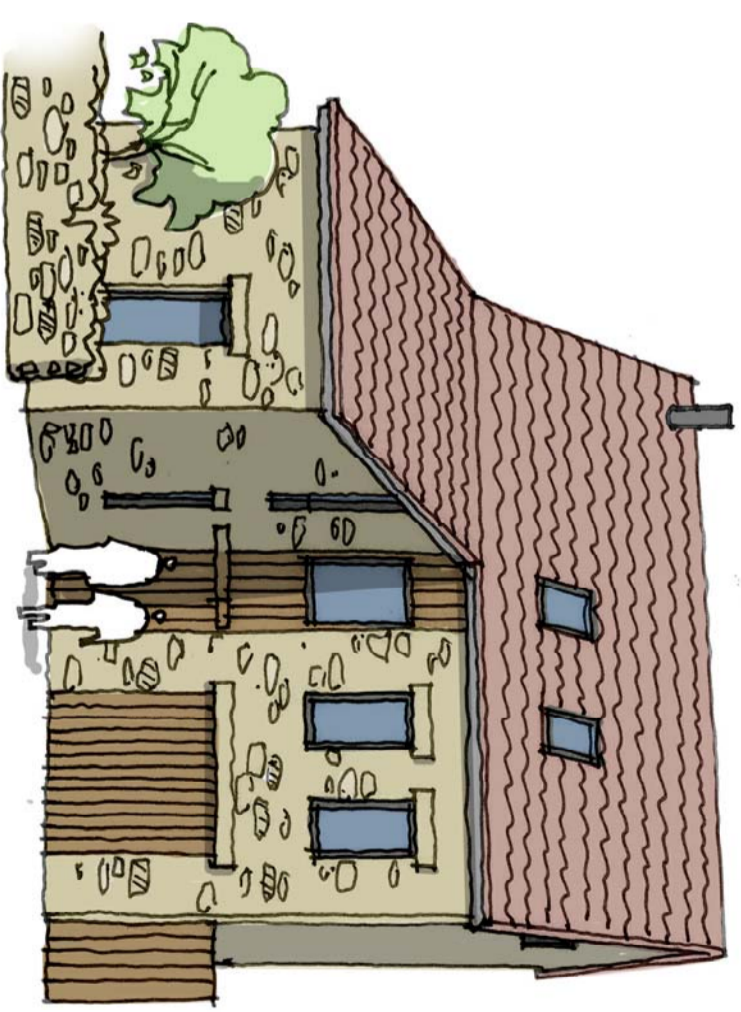
GROUND FLOOR



FIRST FLOOR



SECOND FLOOR



ARTISTS IMPRESSION

26.08.15 C	JP	RD	Woodburner flue added
30.07.15 B	MS	RD	Ridge height reduced
15.06.15 A	MS	RD	Plot numbers added
date	rev	by	note

# Stride Treglown

Architect: Tom Hastings, Interior Design: Sallie Stevens, Landscape Architects: George Dudgeon  
 Professional House, The Pinewood, Clifton, Bristol, BS8 3JF  
 T 0117 974 3271 F 0117 974 5097 www.strideandreglown.co.uk  
 PROJECT  
 Quarry Road, Chipping Sodbury  
 for Newland Homes

DRAWING TITLE  
**KN4 Plans and Elevations**  
 (Plots 6, 7 & 8)

STATUS  
**PLANNING**

SCALE	DATE	DRAWN BY	CHECKED BY
1:100	08.06.15	JP	RD
DRAWING NUMBER	REVISION		
32243_PLO14	C		